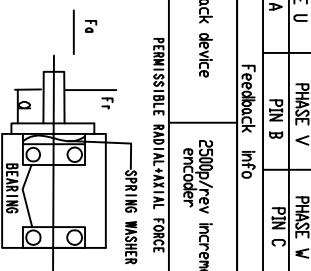
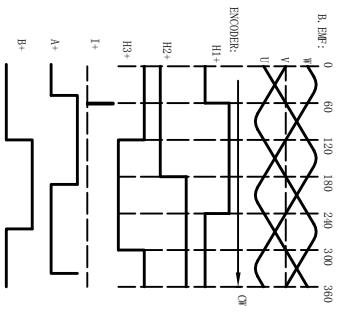


NUMBER OF PHASE	極數	3	Socket for phase			
NUMBER OF POLES	極	10	PHASE U	PHASE V	PHASE W	PE
LINE TO LINE RESISTANCE	線線	0.82±10% ohms@20°C	PIN A	PIN B	PIN C	PIN D
LINE TO LINE INDUCTANCE	線線	7.4±20% mH@1KHz	Feedback Info			
NOMINAL VOLTAGE	額定電壓	220 VAC	Feed back device			
NO LOAD SPEED	空轉轉速	5000±10% RPM	2500p/rev incremental encoder			
NO LOAD CURRENT	空轉電流	0.8 A	PERMISSIBLE RADIAL+AXIAL FORCE			
RATED TORQUE	額定轉矩	3.18N.m	FR			
RATED SPEED	額定轉速	3000 RPM	SPRING WASHER			
RATED CURRENT	額定電流	5.0A	FA			
PEAK TORQUE	峰值轉矩	7N.m	BEARING			
PEAK CURRENT	峰值電流	11A				
BACK EMF CONSTANT	反電勢常數	38Vrms/KRPM				
TORQUE CONSTANT	轉矩常數	0.63N.m/A	AXIAL-FORCE			
INSULATION CLASS	絕緣等級	B 130°C	DISTANCE			
DILECTRIC STRENG	介電強度	1800VAC 1SEC	RADIAL-FORCE			
INSULATION RESIST	絕緣電阻	100MΩ @500VDC	SHAFT RADIAL PLAY			
ROTOR INERTIA	轉子轉動慣量	1.3Kg.cm ²	SHAFT AXIAL PLAY			
WEIGHT	重量	3.73kg	OPERATION AMBIENT			
OPERATION AMBIENT	使用環境	Ambient temperature:-20...+50°C, humidity Max. 85%(No condensation)	STORAGE AMBIENT			
STORAGE AMBIENT	存放環境	Ambient temperature:-20...+85°C, humidity Max. 85%(No condensation)				



Front shaft CW rotate
View to front shaft



Feedback Sockets:

Pin	Define	Pin	Define
A	+5V	J	III+
B	GND	K	III-
C	A+	L	II2+
D	A-	M	II2-
E	B+	N	II3+
F	B-	P	II3-
G	I+	R	II2-
H	I-		

REV	ECN NO.	DESCRIPTION	MATERIAL	CONTR.	CHECK	DATE	P/N.
A		UNLESS OTHERWISE SPECIFIED			XJ	21.04.26	
DECIMALS:		TOLERANCES:	FIRST ANGLE PROJECTION		SPECIFICATION		
X	±0.5	ANGULAR	SCALE		TITLE		
.XX	±0.25	±0.30'	SHEET OF		USED ON		
.XXX	±0.1		FILLING MOTOR		FL1003V100-220V-30EA1		
UNIT: mm					DWG NO.		
DO NOT SCALE DRAWING					REV		
					A		