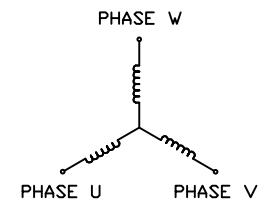
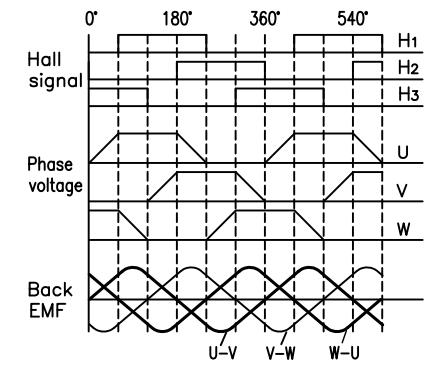


THREE-PHASE CONNECTING



CW from shaft side
从出轴端看为CW

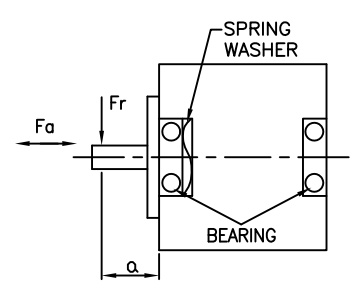


- CN1 JST B5P-VH:
 PIN1 - GND
 PIN2 - Phase U
 PIN3 - Phase V
 PIN4 - Phase W
 PIN5 - GND
- CN2 JST B6B-PH-K-S:
 PIN1-GND
 PIN2-+5V DC(4.5-18V DC)
 PIN3-Hall 1
 PIN4-Hall 2
 PIN5-Hall 3
 PIN6-GND

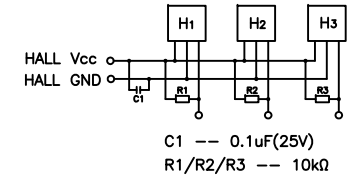
OUTRUNNER BLDCM

NUMBER OF PHASE	绕组相数	3
NUMBER OF POLES	极数	16
LINE TO LINE RESISTANCE	线电阻	1.42±10% ohms@20°C
LINE TO LINE INDUCTANCE	线电感	0.59±20% mH@1kHz
NOMINAL VOLTAGE	额定电压	24 VDC
NO LOAD SPEED	空载转速	6500 RPM
NO LOAD CURRENT	空载电流	<0.3 A
RATED TORQUE	额定转矩	50 mN.m
RATED SPEED	额定转速	5000 RPM
RATED CURRENT	额定电流	1.58 A
PEAK TORQUE	峰值转矩	150 mN.m
PEAK CURRENT	峰值电流	4.3 A
BACK EMF CONSTANT	反电势常数	2.61 Vrms/kRPM

PERMISSIBLE RADIAL+AXIAL FORCE



HALL CONNECTION



TORQUE CONSTANT	转矩常数	35.2 mN.m/A	AXIAL-FORCE 轴向压力	Fa=10 N Max.
INSULATION CLASS	绝缘等级	B 130°C	DISTANCE 距离	a=10 mm
DIELECTRIC STRENGTH	介电强度	600VAC 1s,2mA	RADIAL-FORCE 径向压力	Fr=20 N Max.
INSULATION RESISTANCE	绝缘电阻	100MΩhm @500VDC	SHAFT RADIAL PLAY 径向间隙	0.02mm Max. @4N
ROTOR INERTIA	转子转动惯量	99 g.cm ²	SHAFT AXIAL PLAY 轴向间隙	0.14mm Max. @4N
WEIGHT	重量	80 g		
OPERATION AMBIENT	使用环境	Ambient temperature:-20...+50°C,humidity Max. 85%(No condensation)		
STORAGE AMBIENT	存储环境	Ambient temperature:-10...+35°C,humidity Max. 85%(No condensation)		

DESIGN	DATE	P/N.	3.1.02.045.××××
REV	ECN NO.	DESCRIPTION	TITLE Specifications
UNLESS OTHERWISE SPECIFIED TOLERANCES	MATERIAL	CONTR.	CHECK
DECIMALS: .x ±0.5 .xx ±0.25 .xxx ±0.1			USED ON FL45BLW18-24V-7130A
ANGULAR: ±0°30'			DWG NO.
UNIT: mm	FIRST ANGLE PROJECTION	SCALE N.T.S	REV A
DO NOT SCALE DRAWING		SHEET 1 OF 1	FULLING MOTOR